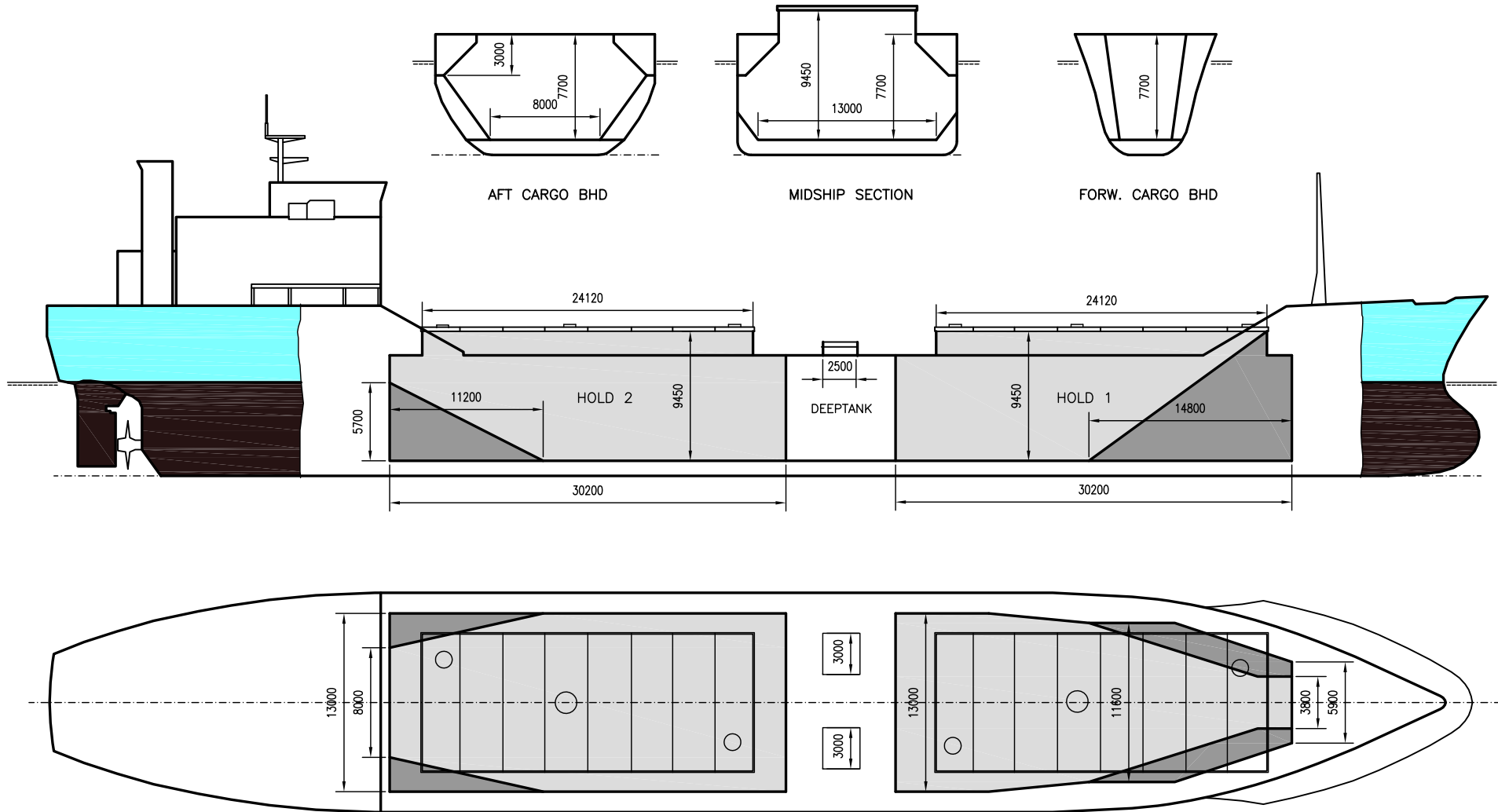


WILSON ROUGH

DEADWEIGHT GROUP
 6000 dwt





WILSON ROUGH

If not otherwise specified :
Dist/Dim in meters
Weights in m.tons

All details given in good faith without guarantee

DWT GROUP 6000
IMO NO 7419200
CALL SIGN 9HSL5
BUILD 1976
FLAG Malta

Builders Georg Eides Sønner AS, Høylandsbygd
Classification BV // I*HULL*MACH -Bulk Carrier ESP Heavy Carqo AUT-UMS
Length oa 103.60
Breadth mld 16.00
Depth mld 8.82
Draft summer 6.96
Deadweight summer draft 6085
Draft winter 6.81
Deadweight winter draft 5885
Gross tonnage 3885
Net tonnage 2048
Immersion(load draft) TPC 13.25
Mean draft of ship in heavy ballast 4.35
Distance from forward end of No.1 Hatch to aft end of last hatch 61.00
Hatch type Kvaerner Transroto (Double Skin)
Container (TEU) capacity Hold / Deck - / -

Max permissible load on deck, mt/sqm 3.40
Max permissible load on tanktop, mt/sqm 8.30
Max air draft - 1 24.50
Max air draft - 2 -
Distance from keel to top antenna -1 28.60
Distance from keel to top antenna -2 -
Water ballast capacity 2 650.00
Fuel main engine - capa.(cbm) 300.00
Fuel aux engine - capa.(cbm) 58.00
Speed service, knots 12.50
Cargo gear No
Bow thruster No
Boxed No
Double skin Yes
Open hatch No
Rhine fitted No
Ammonium Nitrate fitted Yes
FeSi fitted Yes

Hatch details:

- a : Distance from waterline fully ballasted to top of hatch coamings
b : Distance from waterline fully loaded to top of hatch coamings
c : Distance from tank top to top of hatch coamings
d : Max permissible loading on hatch covers
e : Distance from ship's rail to inside hatch coamings
f : Height of hatch coamings
g : Hatch opening
h : No. of Loadingholes on hatchcovers X diameter in mm

Remarks :

If IFO80 capacity only 154.3 cbm

Htch#	Bale							Grain				Hold dimensions	Compartm :		Communication :		Equipment		
	a	b	c	d	e	f	g	h	Hold#	cbm	cbft		cbm	cbft	#	cbm		Type	No
1	6.30	3.60	9.43	2.50	2.80	1.75	24.12.x 10.00	2 x 600 + 1 x 800	1	3032	107 058	3032	107 058	30.20 x 15.60 x 7.13			Telex 1	424 813 110	Inmarsat
2	6.30	3.60	9.43	2.50	2.80	1.75	24.12.x 10.00	2 x 600 + 1 x 800	2	3309	116 840	3309	116 840	30.20 x 15.60 x 7.13			Telex 2	424 813 111	Inmarsat
																	Tlph 1	+47 920 86 677	Gsm
																	Tlph 2		
																	Fax		
																	Email	w-rough@gtw.dualog.com	