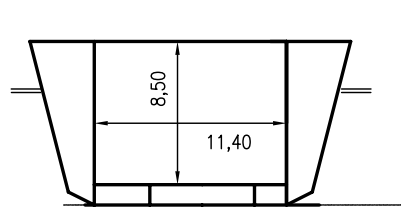
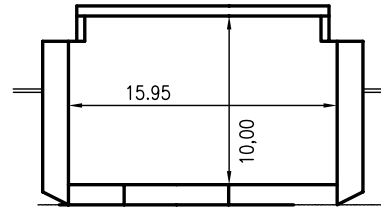


WILSON MAR

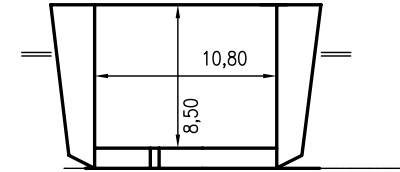
DEADWEIGHT GROUP
6000 dwt



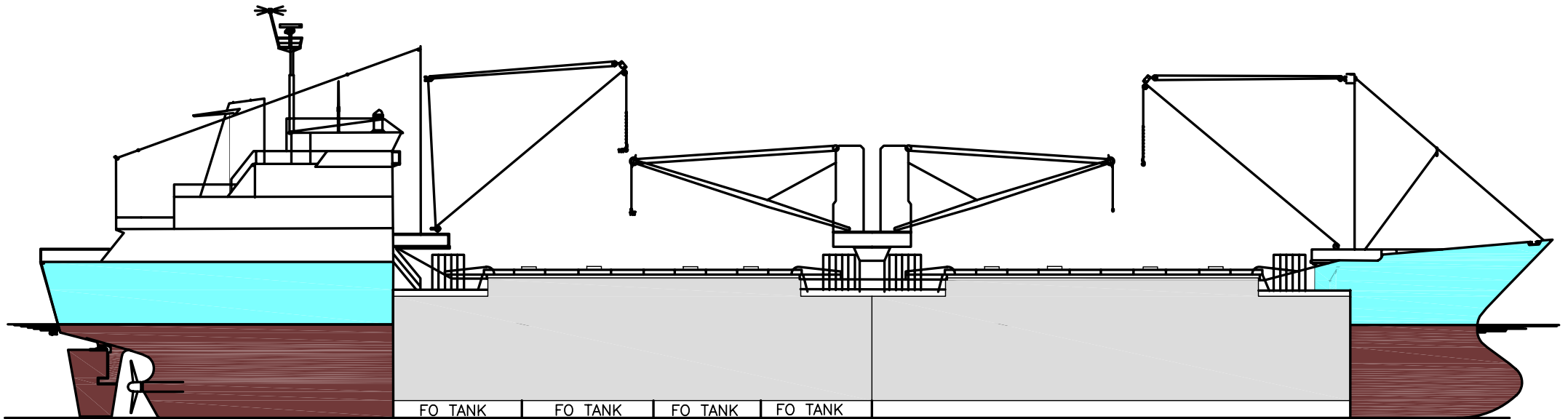
AFT CARGO BHD



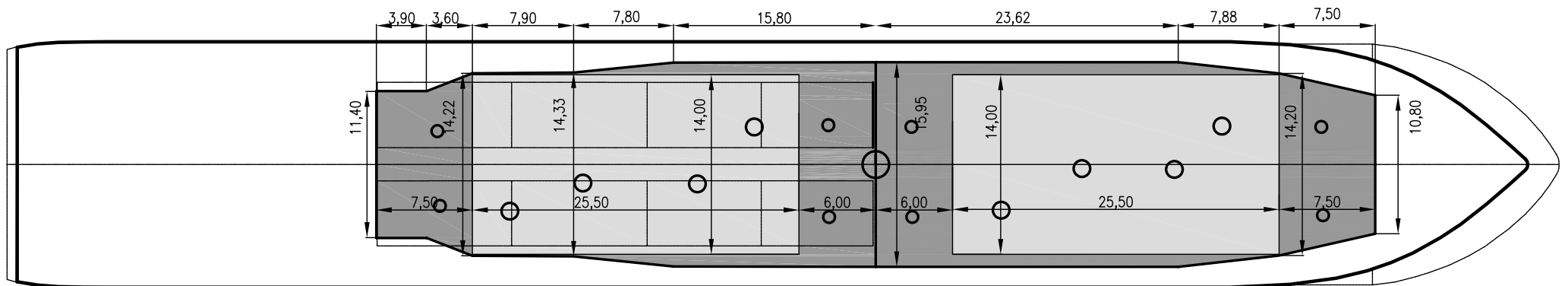
MIDSHIP SECTION



FRW CARGO BHD



FO TANK | FO TANK | FO TANK | FO TANK





WILSON MAR

If not otherwise specified :
Dist/Dim in meters
Weights in m.tons

All details given in good faith without guarantee

DWT GROUP 9655
IMO NO 8216148
CALL SIGN 9HXF6
BUILD 1985
FLAG Malta

Builders HIJOS DE J. BARRERAS S.A. VIGO
Classification LR / 100 A1 - General Cargo - Containers - Ice 1C - UMS
Length oa 123.50
Breadth mld 18.50
Depth mld 10.00
Draft summer 7.60
Deadweight summer draft 9655
Draft winter 7.42
Deadweight winter draft 9200
Gross tonnage 6483
Net tonnage 3096
Immersion(load draft) TPC 20.00
Mean draft of ship in heavy ballast 4.00
Distance from forward end of No.1 Hatch to aft end of last hatch 63.00
Hatch type Mac Gregor Single pull
Container (TEU) capacity Hold / Deck 160 / 80

Hatch details:

- a : Distance from waterline fully ballasted to top of hatch coamings
b : Distance from waterline fully loaded to top of hatch coamings
c : Distance from tank top to top of hatch coamings
d : Max permissible loading on hatch covers
e : Distance from ship's rail to inside hatch coamings
f : Height of hatch coamings
g : Hatch opening
h : No. of Loadingholes on hatchcovers X diameter in mm

Remarks :

NB - Ammonium Nitrate fitted for cargo hold No.1 only.
Speed/consumption:
Ballast, 13.5 knots on 16 mt/day, alternatively 12.5 knots on 12.5 mt/day.
Loaded, 12.6 knots on 16 mt/day, alternatively 12.0 knots on 12.5 mt/day.
Cargo gear: 1 twin crane 2x16 mt + 2 derrick cranes 16 mt each

Max permissible load on deck, mt/sqm 2.50
Max permissible load on tanktop, mt/sqm 11.50
Max air draft - 1 27.10
Max air draft - 2 -
Distance from keel to top antenna -1 31.10
Distance from keel to top antenna -2 -
Water ballast capacity 3 960.00
Fuel main engine - capa.(cbm) 630.00
Fuel aux engine - capa.(cbm) 135.00
Speed service, knots 12.50
Cargo gear Yes
Bow thruster 800.HP. Yes
Boxed No
Double skin Yes
Open hatch No
Rhine fitted No
Ammonium Nitrate fitted Yes
FeSi fitted No

Htch#	Bale							Grain				Hold dimensions	Compartm :		Communication :		Equipment		
	a	b	c	d	e	f	g	h	Hold#	cbm	cbft		cbm	cbft	#	cbm		Type	No
1	8.50	3.90	10.00	2.00	1.20	1.50	25.50 x 14.30	4 x 650mm + 4 x 500mm	1	5574	196 846	5574	196 846	39.00 x 15.95 x 8.50			Telex 1	424894820	Inmarsat
2	7.50	3.90	10.00	2.00	1.20	1.50	25.50 x 14.30	4 x 650mm + 4 x 500mm	2	5455	192 643	5455	192 643	39.00 x 15.95 x 8.50			Telex 2	424894830	Inmarsat
																	Tlph 1	+47 95005890	Gsm
																	Tlph 2	+47 95044046	Gsm
																	Fax	+47 95077974	Gsm
																	Email	w-mar@gtw.dualog.com	