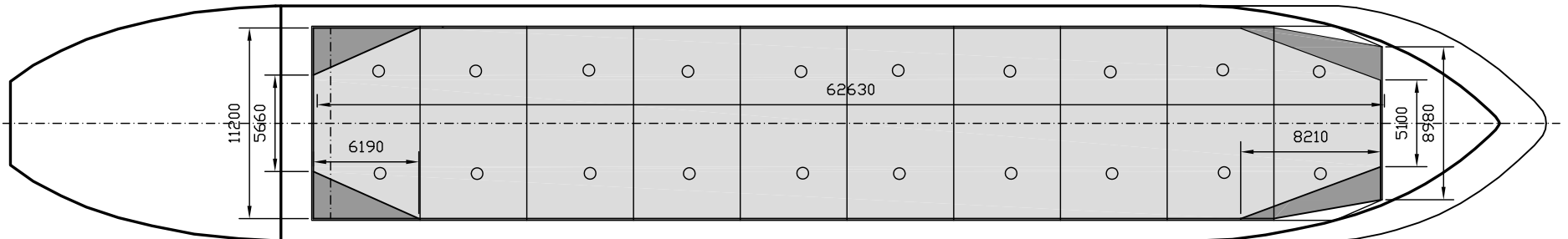
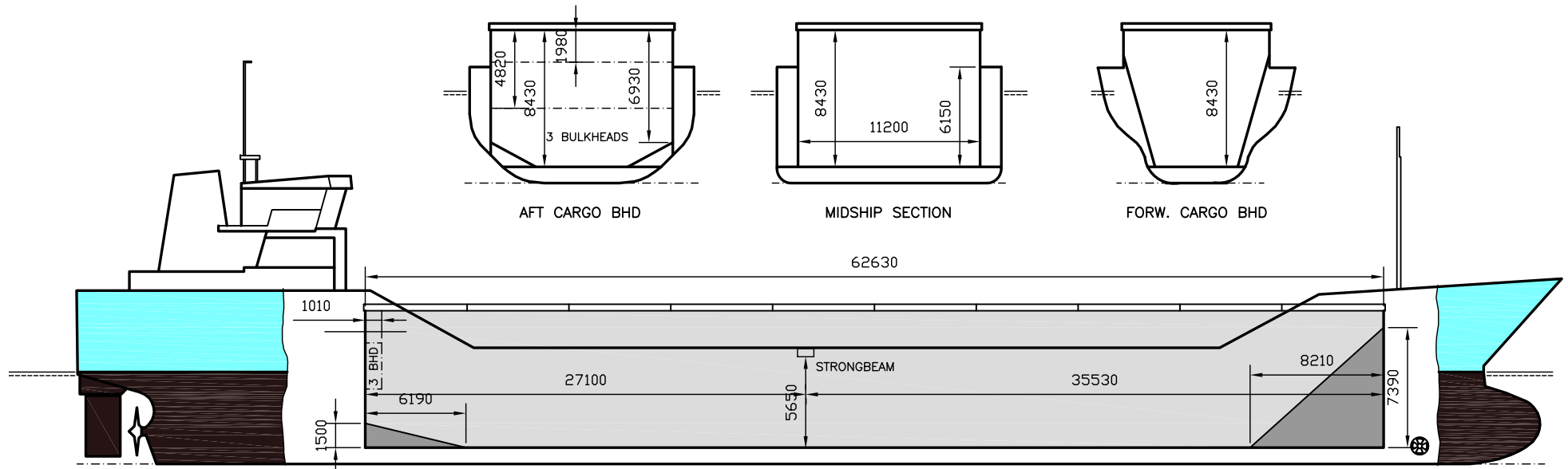


WILSON HARRIER

DEADWEIGHT GROUP
4200 dwt





WILSON HARRIER

Ex. LAURA HELENA
 DWT GROUP 4200
 IMO NO 9064891
 CALL SIGN 9HJP9
 BUILD 08/1993
 FLAG Malta

If not otherwise specified :
 Dist/Dim in meters
 Weights in m.tons

All details given in good faith without guarantee

Builders Patjje Shipyards B.V. Waterhuizen
Classification GL / +100 A5 E1+ MC AUT E1
Length oa 91.20
Breadth mld 13.80
Depth mld 7.15
Draft summer 5.77
Deadweight summer draft 4258
Draft winter 5.62
Deadweight winter draft 4092
Gross tonnage 2811
Net tonnage 1688
Immersion(load draft) TPC 5.76
Mean draft of ship in heavy ballast 3.54
Distance from forward end of No.1 Hatch to aft end of last hatch 62.63
Hatch type Pontoon type
Container (TEU) capacity Hold / Deck 112 / 78

Hatch details:

- a : Distance from waterline fully ballasted to top of hatch coamings
 b : Distance from waterline fully loaded to top of hatch coamings
 c : Distance from tank top to top of hatch coamings
 d : Max permissible loading on hatch covers
 e : Distance from ship's rail to inside hatch coamings
 f : Height of hatch coamings
 g : Hatch opening
 h : No. of Loadingholes on hatchcovers X diameter in mm

Remarks :

- One movable bulkhead in three parts, each part 2.80m high, total height 8.40m, three different positions. If full height used, actual cubic capacity each compartment will be combination of compartments a-b-c-d (f.inst. a + total of b-c-d).
 When not in use, movable bulkhead stowed in aft/upper part of hold, reducing total length of upper part of hold to 61.62m.
 E.mail only when within GSM range.
 One strongbeam in hold, fitted between frames 73 and 74, about 6.20m above tanktop.

Max permissible load on deck, mt/sqm -
Max permissible load on tanktop, mt/sqm 12.00
Max air draft - 1 26.20
Max air draft - 2 -
Distance from keel to top antenna -1 29.50
Distance from keel to top antenna -2 -
Water ballast capacity 1 594.00
Fuel main engine - capa.(cbm) 234.00
Fuel aux engine - capa.(cbm) 70.00
Speed service, knots 12.50
Cargo gear No
Bow thruster 200 Kw Yes
Boxed No
Double skin Yes
Open hatch Yes
Rhine fitted No
Ammonium Nitrate fitted Yes
FeSi fitted Yes

| Htch# | Bale | | | | | | | Grain | | | | Hold dimensions | Compartment : | | Communication : | | Equipment | | |
|-------|------|-----|------|------|------|------|---------------|----------------------|-------|------|---------|-----------------|---------------|----------------------|-----------------|-------|-----------|--------------------------|----------|
| | a | b | c | d | e | f | g | h | Hold# | cbm | cbft | | cbm | cbft | # | cbm | | Type | No |
| 1 | 5.8 | 3.5 | 8.40 | 1.60 | 1.00 | 2.20 | 62.63 x 11.20 | 10x320mm, 10x 640 mm | 1 | 5624 | 198 610 | 5624 | 198 610 | 62.63 x 11.20 x 8.43 | a | 1 194 | Telex 1 | | Inmarsat |
| | | | | | | | | | | | | | | | b | 1 562 | Telex 2 | | |
| | | | | | | | | | | | | | | | c | 2 267 | Tlph 1 | +47 977 66 365 | Gsm |
| | | | | | | | | | | | | | | | d | 601 | Tlph 2 | +47 415 62 017 | Gsm |
| | | | | | | | | | | | | | | | | | Fax | | |
| | | | | | | | | | | | | | | | | | Email | w-harrier@gwt.dualog.com | |