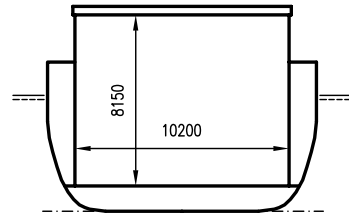
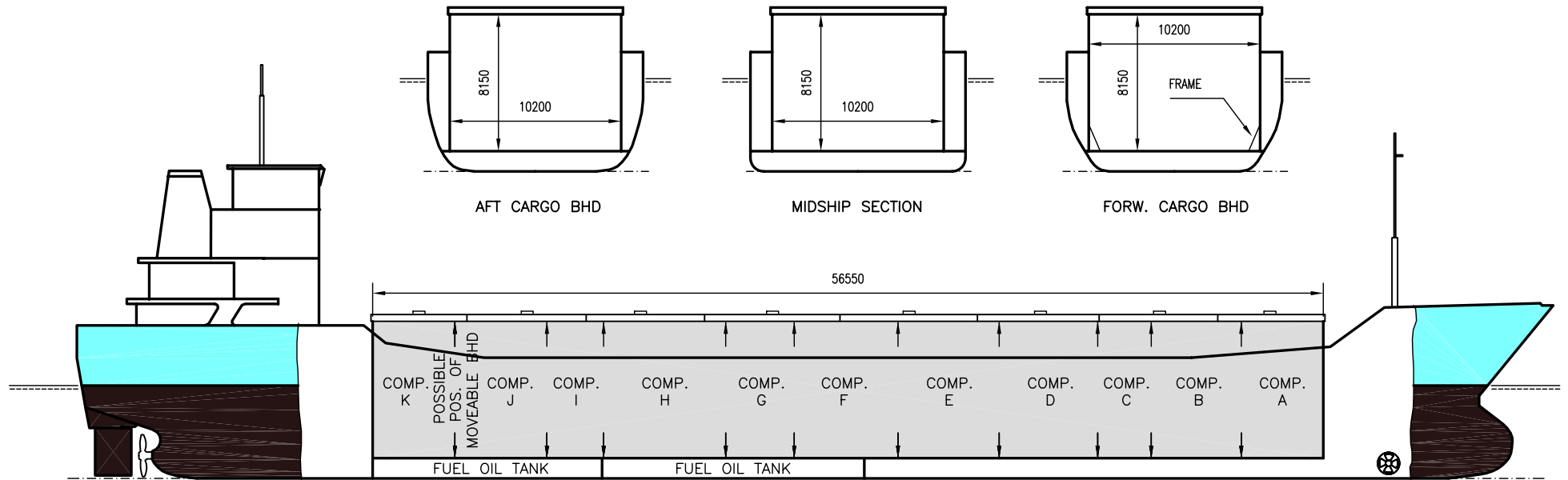


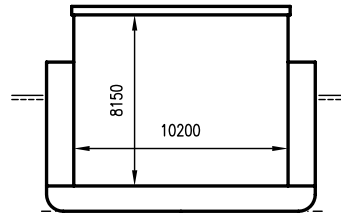


WILSON GRIMSBY

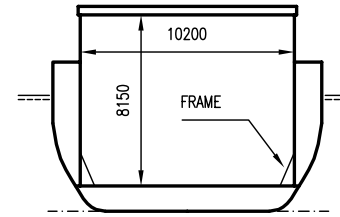
DEADWEIGHT GROUP
3500 dwt



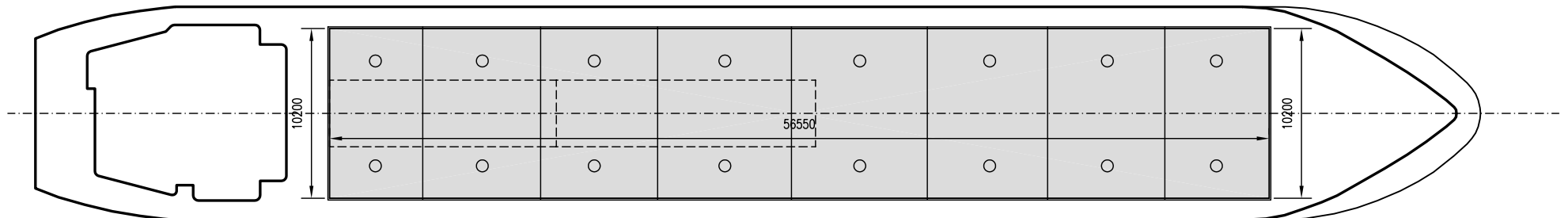
AFT CARGO BHD



MIDSHIP SECTION



FORW. CARGO BHD





WILSON GRIMSBY

If not otherwise specified :
Dist/Dim in meters
Weights in m.tons

DWT GROUP 3500
IMO NO 9056040
CALL SIGN 8PSB
BUILD 1993
FLAG Barbados

All details given in good faith without guarantee

Builders	Slovenska Lodnice AS, Komarno Slovakia
Classification	GL / 100 A5 E G MC AUT E
Length oa	87.90
Breadth mld	12.80
Depth mld	7.10
Draft summer	5.52
Deadweight summer draft	3671
Draft winter	5.41
Deadweight winter draft	3554
Gross tonnage	2506
Net tonnage	1351
Immersion(load draft) TPC	10.10
Mean draft of ship in heavy ballast	3.00
Distance from forward end of No.1 Hatch to aft end of last hatch	56.55
Hatch type	Kvaerner Multifold crocodile, with hydraulic control
Container (TEU) capacity Hold / Deck	108 / 60

Max permissible load on deck, mt/sqm	1.56
Max permissible load on tanktop, mt/sqm	15.00
Max air draft - 1	22.00
Max air draft - 2	-
Distance from keel to top antenna -1	25.50
Distance from keel to top antenna -2	-
Water ballast capacity	1 629.30
Fuel main engine - capa.(cbm)	193.90
Fuel aux engine - capa.(cbm)	-
Speed service, knots	10.50
Cargo gear	No
Bow thruster	185 Kw . Yes
Boxed	Yes
Double skin	Yes
Open hatch	Yes
Rhine fitted	No
Ammonium Nitrate fitted	Yes
FeSi fitted	Yes

Hatch details:

- a : Distance from waterline fully ballasted to top of hatch coamings
- b : Distance from waterline fully loaded to top of hatch coamings
- c : Distance from tank top to top of hatch coamings
- d : Max permissible loading on hatch covers
- e : Distance from ship's rail to inside hatch coamings
- f : Height of hatch coamings
- g : Hatch opening
- h : No. of Loadingholes on hatchcovers X diameter in mm

Remarks :

- Fesi fitted for packaged goods only.
- Free height in hold under knuckle point (hinges) 7.99m.
- 2 moveable bulkheads, full hold height, 10 positions. Free length on tanktop 55.85M when bulkheads stored in aft position.
- 1 frame each side, 1.25M from forward end of hold, height 1.78M from tanktop and up, protruding abt 0.56M into hold at tanktop level.
- No containerfittings on board.

Htch#	Bale							Grain				Hold dimensions	Compartm :		Communication :		Equipment		
	a	b	c	d	e	f	g	h	Hold#	cbm	cbft		cbm	cbft	#	cbm		Type	No
1	6.20	3.90	8.13	1.56	1.30	2.28	56.50 x 10.20	16 x 600 mm	1	4612	162 872	4649	164 178	56.50 x 10.20 x 8.13	a	430	Telex 1	431419310	Inmarsat
															b	444	Telex 2	431419311	Inmarsat
															c	254	Tlph 1	+47 47678732	Gsm
															d	465	Tlph 2	+47 47883383	Gsm
															e	489	Fax	+47 90215271	Gsm
															f	519	Email	w-grimsby@gtw.dualog.com	
															g	329			
															h	626			
															i	270			
															j	429			
															k	394			