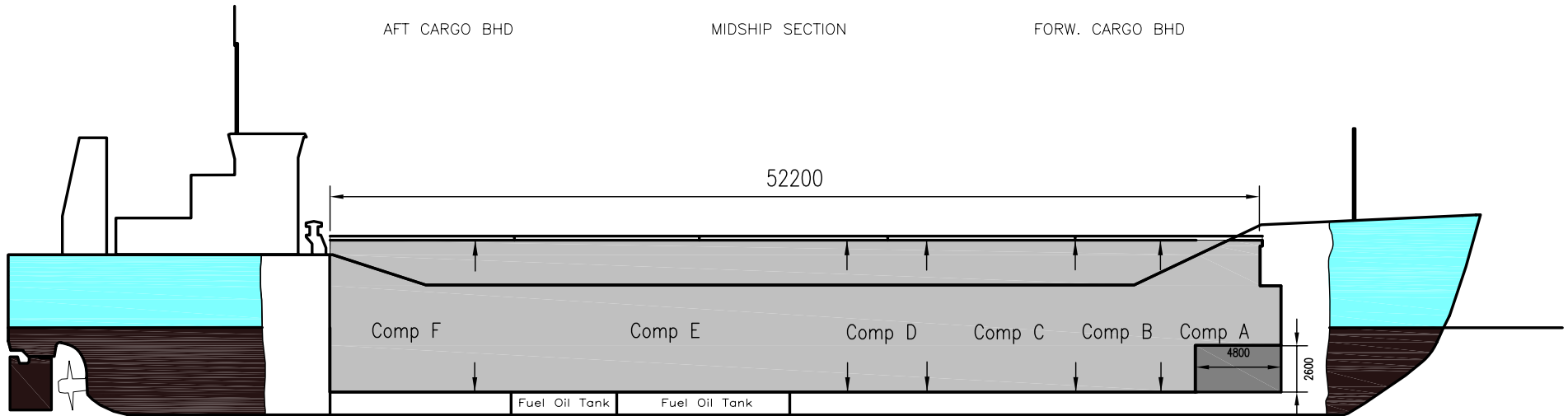
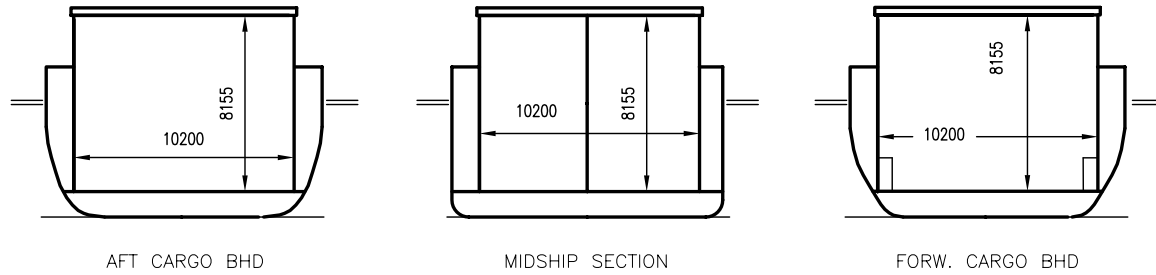


WILSON GARSTON

DEADWEIGHT GROUP
 3500 dwt





WILSON GARSTON

If not otherwise specified :

Dist/Dim in meters

Weights in m.tons

All details given in good faith without guarantee

DWT GROUP 3500
 IMO NO 9000833
 CALL SIGN 8PSO
 BUILD 09/1989
 FLAG Barbados

BuildersPeters Schiffswerft, Wewelsfleth
ClassificationGL / GL +100 A5 E2 G. +MC E2 AUT 24/24
Length oa82.30
Breadth mld12.58
Depth mld7.20
Draft summer5.71
Deadweight summer draft3560
Draft winter5.57
Deadweight winter draft3415
Gross tonnage2270
Net tonnage1196
Immersion(load draft) TPC9.60
Mean draft of ship in heavy ballast3.50
Distance from forward end of No.1 Hatch to aft end of last hatch52.20
Hatch typeMac Gregor Piggy Back
Container (TEU) capacity Hold / Deck94 / 88

Hatch details:

- a : Distance from waterline fully ballasted to top of hatch coamings
 b : Distance from waterline fully loaded to top of hatch coamings
 c : Distance from tank top to top of hatch coamings
 d : Max permissible loading on hatch covers
 e : Distance from ship's rail to inside hatch coamings
 f : Height of hatch coamings
 g : Hatch opening
 h : No. of Loadingholes on hatchcovers X diameter in mm

Remarks :

- Fesi fitted for packaged goods only.
 Two movable bulheads, five different positions.
 Vessel able to call NAABSA ports.

Max permissible load on deck, mt/sqm 1.54
Max permissible load on tanktop, mt/sqm 11.10
Max air draft - 1 10.59
Max air draft - 2 21.35
Distance from keel to top antenna -1 24.10
Distance from keel to top antenna -2 21.20
Water ballast capacity 1 447.00
Fuel main engine - capa.(cbm) 215.00
Fuel aux engine - capa.(cbm) -
Speed service, knots 11.00
Cargo gear No
Bow thruster 160 Kw. Yes
Boxed Yes
Double skin Yes
Open hatch Yes
Rhine fitted No
Ammonium Nitrate fitted Yes
FeSi fitted Yes

Htch#	Bale							Grain				Hold dimensions	Compartm :		Communication :		Equipment	
	a	b	c	d	e	f	g	h	Hold#	cbm	cbft		cbm	cbft	#	cbm		Type
1	5.40	3.80	8.15	1.54	1.19	2.10	52.20 x 10.20	1	4392	155 094	4392	155 094	53.40 x 10.20 x 8.15	a	852	Telex 1	431420610	Inmarsat
														b	349	Telex 2	431420620	Inmarsat
														c	598	Tlph 1	+47 974 87 979	Gsm
														d	399	Tlph 2	+47 974 88 374	Gsm
														e	1 496	Fax	+47 482 13 564	Gsm
														f	698	Email	w-garston@gtw.dualog.com	