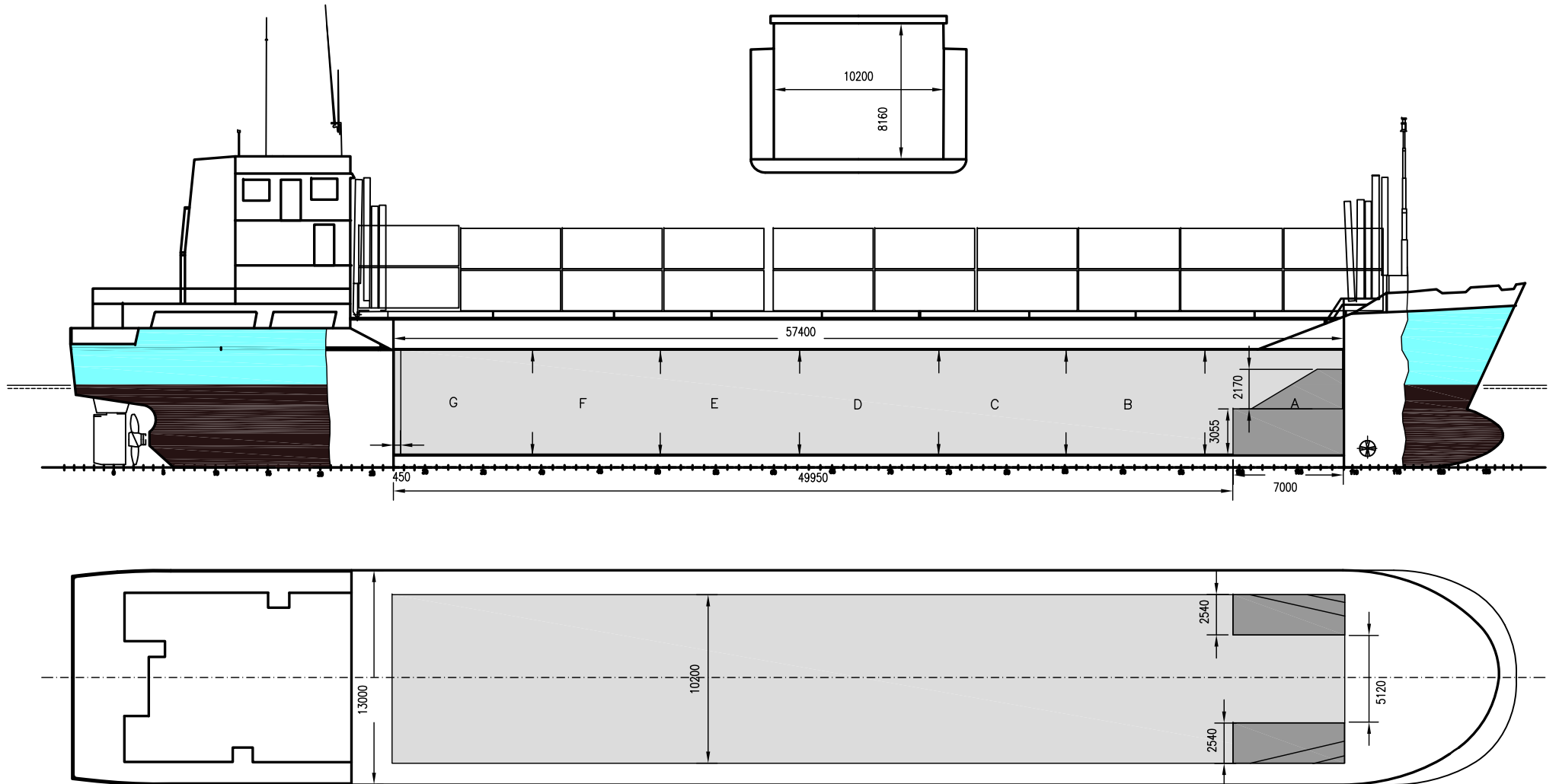




WILSON DVINA

DEADWEIGHT GROUP
3000 dwt





WILSON DVINA

If not otherwise specified :
Dist/Dim in meters
Weights in m.tons

All details given in good faith without guarantee

DWT GROUP 3000
IMO NO 9005742
CALL SIGN 8PTC
BUILD 05/1992
FLAG Barbados

Builders Estaleiros Navais do Mondego, Figueira da Foz
Classification GL / +100 A5 E MC E AUT
Length oa 87.49
Breadth mld 13.00
Depth mld 7.11
Draft summer 5.07
Deadweight summer draft 3269
Draft winter 5.07
Deadweight winter draft 3269
Gross tonnage 2481
Net tonnage 1206
Immersion(load draft) TPC 10.40
Mean draft of ship in heavy ballast 3.51
Distance from forward end of No.1 Hatch to aft end of last hatch 57.40
Hatch type Kvaerner Multifold, Crocodile
Container (TEU) capacity Hold / Deck 104 / 98

Hatch details:

- a : Distance from waterline fully ballasted to top of hatch coamings
b : Distance from waterline fully loaded to top of hatch coamings
c : Distance from tank top to top of hatch coamings
d : Max permissible loading on hatch covers
e : Distance from ship's rail to inside hatch coamings
f : Height of hatch coamings
g : Hatch opening
h : No. of Loadingholes on hatchcovers X diameter in mm

Remarks :

- One bulkhead - 7 different positions.
Bulkhead dimentions: 0.26m x 9.86m x 7.89m =20.2 cbm
Parking position aft.
Fesi fitted for packaged goods only.

Max permissible load on deck, mt/sqm 1.60
Max permissible load on tanktop, mt/sqm 12.00
Max air draft - 1 22.70
Max air draft - 2 -
Distance from keel to top antenna -1 26.70
Distance from keel to top antenna -2 -
Water ballast capacity 1 604.77
Fuel main engine - capa.(cbm) 142.20
Fuel aux engine - capa.(cbm) -
Speed service, knots 11.00
Cargo gear No
Bow thruster 130 KW Yes
Boxed No
Double skin Yes
Open hatch Yes
Rhine fitted No
Ammonium Nitrate fitted Yes
FeSi fitted Yes

Htch#	Bale							Grain				Hold dimensions	Compartm :		Communication :		Equipment		
	a	b	c	d	e	f	g	h	Hold#	cbm	cbft		cbm	cbft	#	cbm		Type	No
1	5.60	3.80	8.16	1.60	1.26	2.27	57.40 x 10.20	17 x 730mm	1	4576	161 601	4630	163 508	57.40 x 10.20 x 8.16	a	580	Telex 1	431 422 010	Inmarsat
															b	676	Telex 2	431 422 011	Inmarsat
															c	676	Tlph 1	+47 417 94 317	Gsm
															d	676	Tlph 2		
															e	676	Fax		
															f	676	Email	w-dvina@gtw.dualog.com	
															g	676			