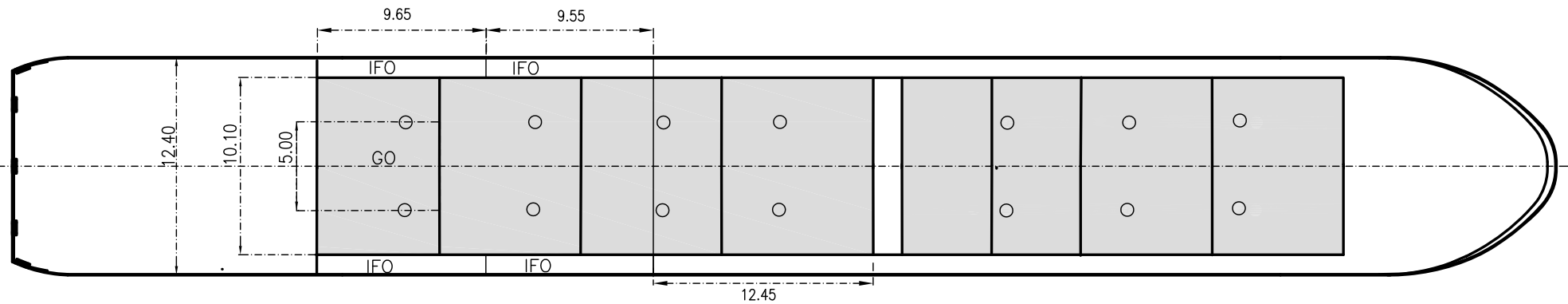
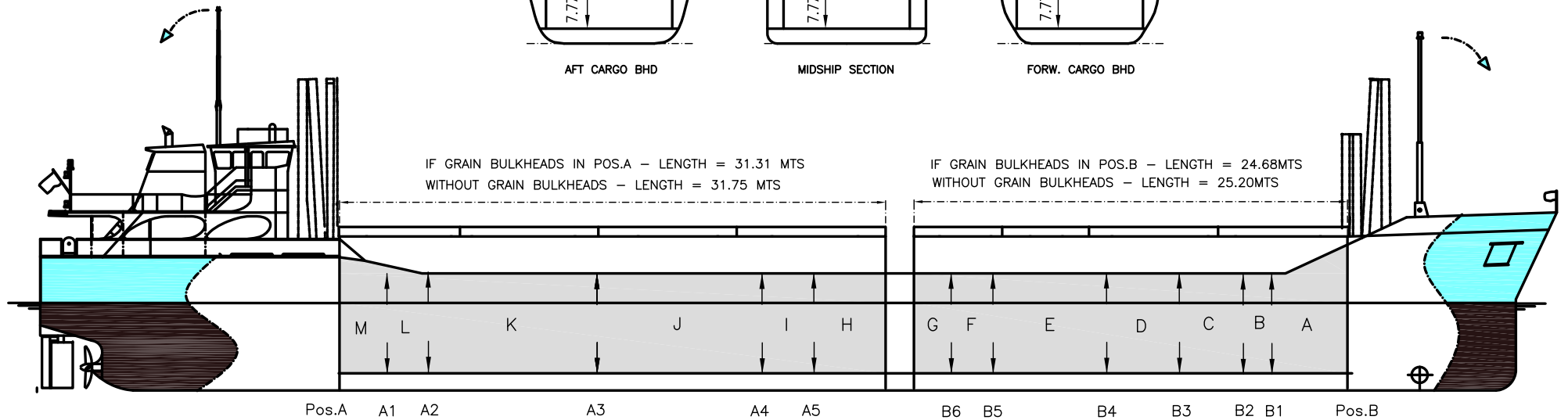
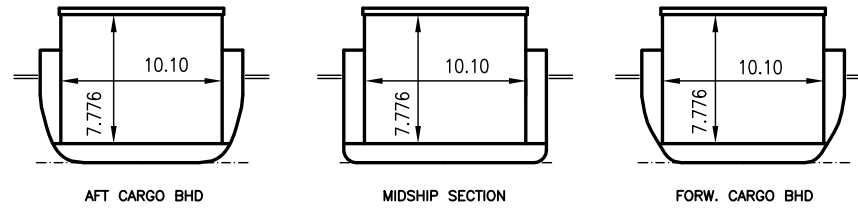




WILSON ABERDEEN

DEADWEIGHT GROUP
3500 dwt





WILSON ABERDEEN

If not otherwise specified :
Dist/Dim in meters
Weights in m.tons

All details given in good faith without guarantee

Ex. STÖRTEBEKER
DWT GROUP 3500
IMO NO 9313723
CALL SIGN 9HWD9
BUILD 02/2009
FLAG Malta

Builders Slovenska Lodenice AS, Komarno Slovakia
Classification GL / 100 A5 E G SOLAS II Req 19 DBC C2P40 MC E AUT
Length oa 88.30
Breadth mld 12.40
Depth mld 7.76
Draft summer 5.15
Deadweight summer draft 3574
Draft winter 5.04
Deadweight winter draft 3463
Gross tonnage 2451
Net tonnage 1033
Immersion(load draft) TPC 10.55
Mean draft of ship in heavy ballast 3.10
Distance from forward end of No.1 Hatch to aft end of last hatch 58.50
Hatch type TTS multifold crocodile
Container (TEU) capacity Hold / Deck - / 20

Max permissible load on deck, mt/sqm 1.60
Max permissible load on tanktop, mt/sqm 15.00
Max air draft - 1 23.80
Max air draft - 2 -
Distance from keel to top antenna -1 21.30
Distance from keel to top antenna -2 15.50
Water ballast capacity 1 378.00
Fuel main engine - capa.(cbm) 170.00
Fuel aux engine - capa.(cbm) 44.00
Speed service, knots 10.30
Cargo gear No
Bow thruster 130 kW Yes
Boxed Yes
Double skin Yes
Open hatch Yes
Rhine fitted No
Ammonium Nitrate fitted Yes
FeSi fitted Yes

Hatch details:

- a : Distance from waterline fully ballasted to top of hatch coamings
b : Distance from waterline fully loaded to top of hatch coamings
c : Distance from tank top to top of hatch coamings
d : Max permissible loading on hatch covers
e : Distance from ship's rail to inside hatch coamings
f : Height of hatch coamings
g : Hatch opening
h : No. of Loadingholes on hatchcovers X diameter in mm

Remarks :

- Equipped for carriage of containers only on hatch 2 (20 TAU).
Equipped for dangerous goods.
2 movable bulkheads in 9 different positions making 4 different compartments.
Hatch opening (g) is excl. Bulkheads.
Hold dimensions are incl. Bulkheads in parked positions.

Htch#	Bale							Grain				Hold dimensions	Compartment :		Communication :		Equipment		
	a	b	c	d	e	f	g	h	Hold#	cbm	cbft		cbm	cbft	#	cbm		Type	No
1	5.87	3.82	7.78	1.60	1.10	2.25	25.20 x 10.10	6 x 600mm	1	1940	68 511	1940	68 511	24.70 x 10.10 x 7.776	a	321	Tlph 1	+ 49 162 239 5516	Gsm
2	5.87	3.82	7.78	1.60	1.10	2.25	31.80 x 10.10	8 x 600mm	2	2462	86 946	2462	86 946	31.35 x 10.10 x 7.776	b	120	Tlph 2	008816 3183 4805	Inmarsat
															c	239	Telex 1	424 962 211	Inmarsat
															d	334	Telex 2	424 962 212	Inmarsat
															e	500	Fax		
															f	168	Email	Master.wilsonaberdeen@telaurus.net	
															g	179			
															h	317			
															i	215			
															j	689			
															k	784			
															l	168			
															m	226			