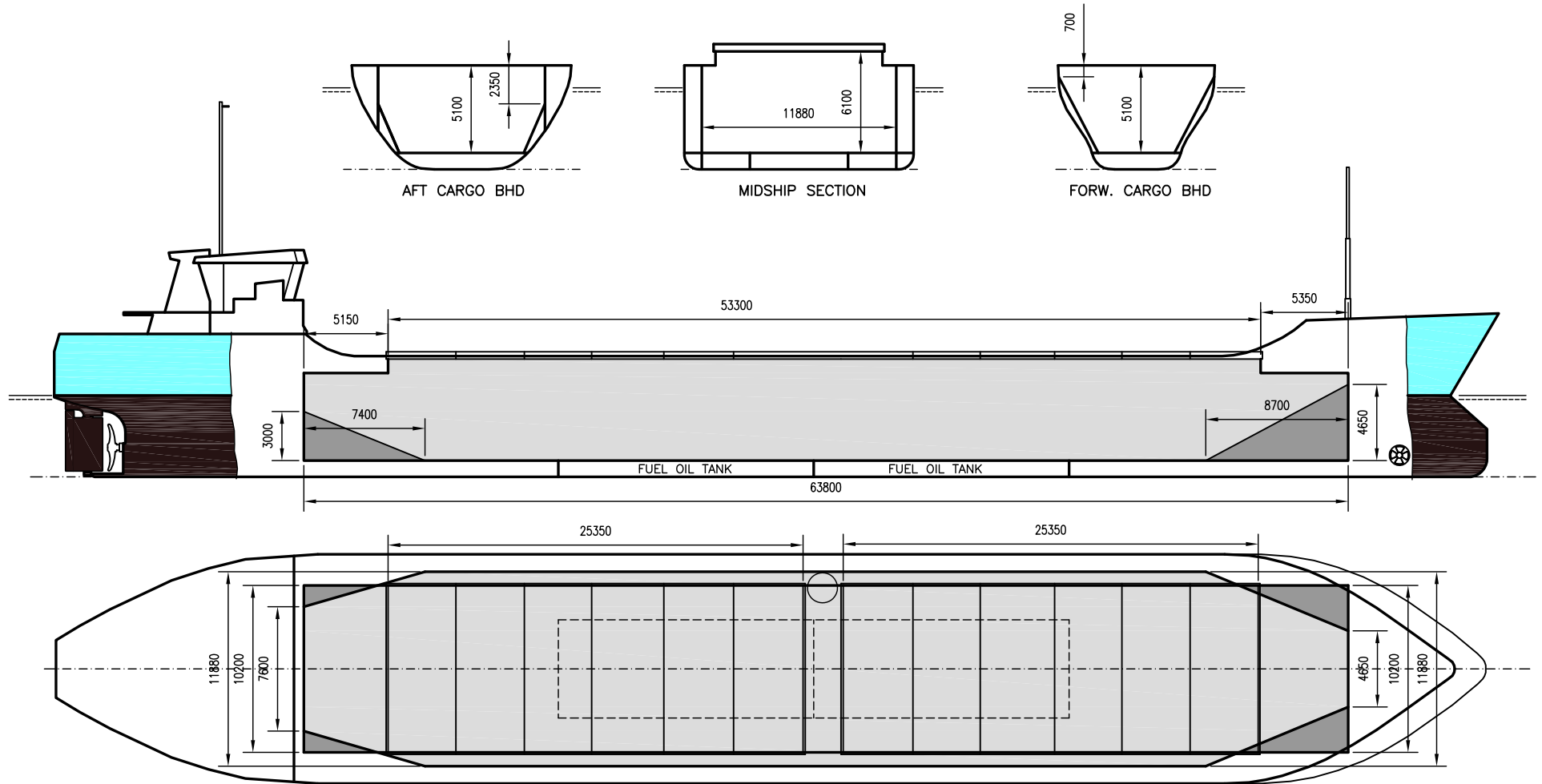


TINNO

DEADWEIGHT GROUP
3500 dwt





TINNO

If not otherwise specified :
Dist/Dim in meters
Weights in m.tons

All details given in good faith without guarantee

DWT GROUP 3500
IMO NO 8908806
CALL SIGN C6QJ3
BUILD 1991
FLAG Bahamas

Builders	Bodewes Scheepswerken BV	Max permissible load on deck, mt/sqm	2.30
Classification	BV // I*HULL*MACH aen.cargo, heavy cargo, unres.nav, ICE*AUT-UMS	Max permissible load on tanktop, mt/sqm	12.00
Length oa	88.15	Max air draft - 1	26.70
Breadth mld	14.00	Max air draft - 2	-
Depth mld	6.35	Distance from keel to top antenna -1	30.00
Draft summer	5.00	Distance from keel to top antenna -2	-
Deadweight summer draft	3504	Water ballast capacity	1 210.00
Draft winter	4.90	Fuel main engine - capa.(cbm)	204.00
Deadweight winter draft	3400	Fuel aux engine - capa.(cbm)	-
Gross tonnage	1986	Speed service, knots	10.50
Net tonnage	1246	Cargo gear	No
Immersion(load draft) TPC	10.70	Bow thruster 240 KW . Yes
Mean draft of ship in heavy ballast	2.88	Boxed	No
Distance from forward end of No.1 Hatch to aft end of last hatch	53.50	Double skin	Yes
Hatch type	Pontoon type	Open hatch	No
Container (TEU) capacity Hold / Deck	- / 39	Rhine fitted	No
		Ammonium Nitrate fitted	Yes
		FeSi fitted	Yes

Hatch details:

- a : Distance from waterline fully ballasted to top of hatch coamings
b : Distance from waterline fully loaded to top of hatch coamings
c : Distance from tank top to top of hatch coamings
d : Max permissible loading on hatch covers
e : Distance from ship's rail to inside hatch coamings
f : Height of hatch coamings
g : Hatch opening
h : No. of Loadingholes on hatchcovers X diameter in mm

Remarks :

Vessel designed for NAABSA condition.

Htch#	Bale							Grain				Hold dimensions	Compartm :		Communication :		Equipment		
	a	b	c	d	e	f	g	h	Hold#	cbm	cbft		cbm	cbft	#	cbm		Type	No
1	4.30	2.18	6.10	1.75	1.90	0.83	25.35 x 10.20	0	1	4237	149 630	4262	150 513	63.90 x 11.70 x 5.10			Telex 1	430 875 210	Gsm
2	4.30	2.18	6.10	1.75	1.90	0.83	25.35 x 10.20	0									Telex 2	430 875 220	Inmarsat
																	Tlph 1	+47 934 65 476	Gsm
																	Tlph 2		
																	Fax		
																	Email	tinno@gtw.dualog.com	