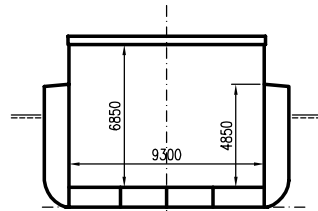


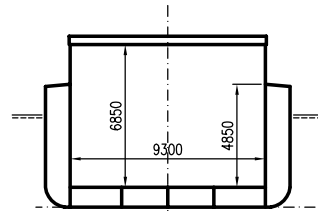


# THEBE

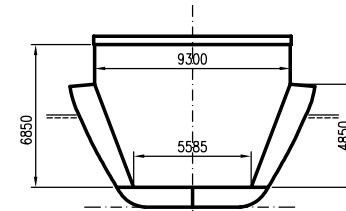
DEADWEIGHT GROUP  
1850 – 2400 dwt



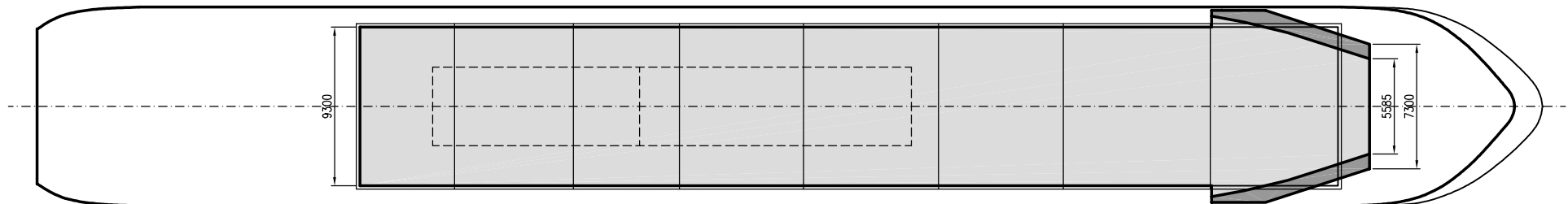
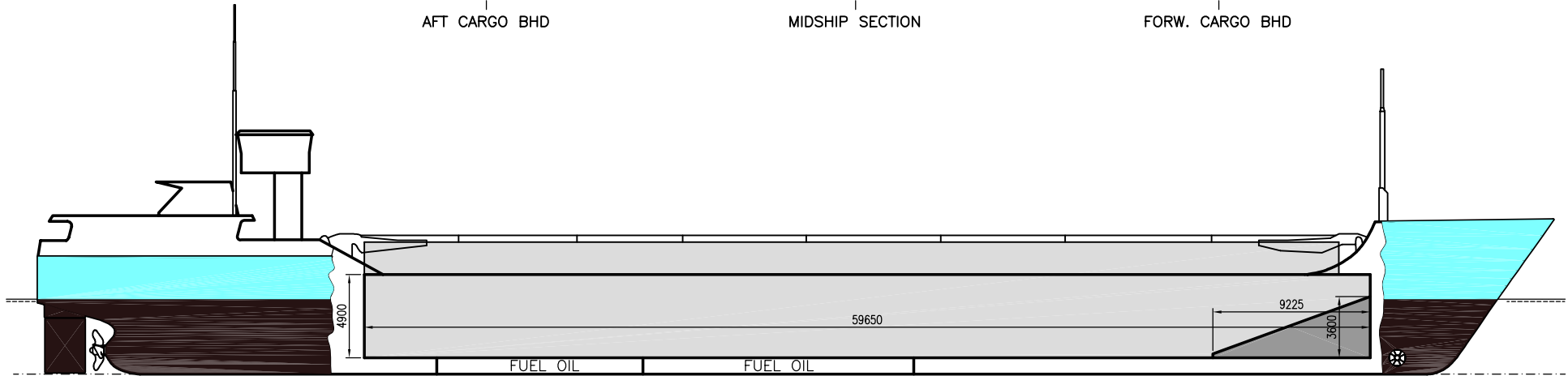
AFT CARGO BHD



MIDSHIP SECTION



FORW. CARGO BHD





# THEBE

If not otherwise specified :  
Dist/Dim in meters  
Weights in m.tons

All details given in good faith without guarantee

DWT GROUP 1850-2400  
IMO NO 9199696  
CALL SIGN V2OS  
BUILD 06/2000  
FLAG Antigua & Barbuda

**Builders** ..... Tuleca, Romania  
**Classification** ..... BV // I 3/3 E AUT MC Fin/Swe Ice Class 1B  
**Length oa** ..... 89.60  
**Breadth mld** ..... 11.65  
**Depth mld** ..... 5.80  
**Draft summer** ..... 4.48  
**Deadweight summer draft** ..... 2460  
**Draft winter** ..... 4.39  
**Deadweight winter draft** ..... 2370  
**Gross tonnage** ..... 1846  
**Net tonnage** ..... 1081  
**Immersion(load draft) TPC** ..... 9.56  
**Mean draft of ship in heavy ballast** ..... 3.12  
**Distance from forward end of No.1 Hatch to aft end of last hatch** ..... 57.81  
**Hatch type** ..... Kvaerner Multifold crocodile, with hydraulic control  
**Container (TEU) capacity Hold / Deck** ..... 52 / 72

**Max permissible load on deck, mt/sqm** ..... 1.00  
**Max permissible load on tanktop, mt/sqm** ..... 15.00  
**Max air draft - 1** ..... 19.88  
**Max air draft - 2** ..... 8.48  
**Distance from keel to top antenna -1** ..... 23.00  
**Distance from keel to top antenna -2** ..... 11.60  
**Water ballast capacity** ..... 1 118.03  
**Fuel main engine - capa.(cbm)** ..... 150.11  
**Fuel aux engine - capa.(cbm)** ..... -  
**Speed service, knots** ..... 11.00  
**Cargo gear** ..... No  
**Bow thruster** ..... 260.HP. Yes  
**Boxed** ..... No  
**Double skin** ..... Yes  
**Open hatch** ..... Yes  
**Rhine fitted** ..... Yes  
**Ammonium Nitrate fitted** ..... Yes  
**FeSi fitted** ..... Yes

## Hatch details:

- a : Distance from waterline fully ballasted to top of hatch coamings  
b : Distance from waterline fully loaded to top of hatch coamings  
c : Distance from tank top to top of hatch coamings  
d : Max permissible loading on hatch covers  
e : Distance from ship's rail to inside hatch coamings  
f : Height of hatch coamings  
g : Hatch opening  
h : No. of Loadingholes on hatchcovers X diameter in mm

## Remarks :

- Vessel fitted with 2 movable bulkheads, 8 different positions.  
Free length on tanktop with both bulkheads in aft storage position about 58.50m.

Htch#	Bale							Grain				Hold dimensions	Compartment :		Communication :		Equipment		
	a	b	c	d	e	f	g	h	Hold#	cbm	cbft		cbm	cbft	#	cbm		Type	No
1	4.68	3.32	6.85	1.56	1.18	2.00	57.81 x 9.30	0	1	3582	126 512	3674	129 748	57.81 x 9.30 x 6.85	1	562	Telex 1	430 402 134	Inmarsat
															2	196	Telex 2	430 402 135	Inmarsat
															3	430	Tlph 1	+49 173 6130364	Gsm
															4	851	Tlph 2		
															5	92	Fax		
															6	700	Email	charterers.thebe@amosconnect.com	
															7	508			
															8	196			
															9	226			